

TGHD11N Series Disconnecter Switches



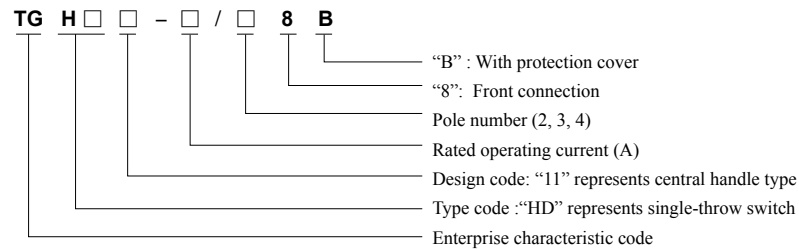
1 Product overview

TGHD11N series disconnecter switches is a new product developed based on HD11, and an ideal replacement product for HD11 and HD11F ideal replacement products. It can greatly improve the personal safety protection performance, and prevent accidental electric shock.

It is mainly used in low-voltage distribution equipment for occasional manual power on, power off and isolation of the power supply, cutting off and isolating power supply.

This product complies with IEC 60947-3 standard.

2 Type designation



*If 2/3P products are required, please contact us.

3 Product parameter

Table 1

Conventional heating current I _{th} (A)	160
Rated operating current I _e (A)	63、80、100、160
Rated operating voltage U _e (V)	415/690/800
Rated insulation voltage U _i (V)	1000
Rated impulse withstand voltage U _{imp} (kV)	12
Utilization Category	AC-20A
Mechanical life	10000
Rated short-duration withstand current I _{ew} (kA/s)	5

4 Normal working conditions and installation conditions

4.1 The ambient air temperature shall not exceed +40°C, and not lower than 5°C.

4.2 The altitude of the installation site shall be not more than 2,000m.

4.3 Humidity:

When the maximum temperature is +40°C, the relative humidity of the atmosphere shall be not higher than 50%, and a higher relative humidity is allowed at the lower temperature.

For example, the relative humidity can reach 90% at 20°C. Special measures shall be taken to deal with occasional condensation due to temperature change.

4.4 The grade of environment pollution is 3.

4.5 The switch shall be installed in a place without significant shake, shock and vibration, and invasion of rain and snow, where there shall be no media with explosive danger which does not contain any gas or dust sufficient to corrode metal and damage the insulation.

TGHD11N Series Disconnecter Switches

5 Outline dimension and installation dimension of the product

Outline and installation dimension of TGHD11N-160 (see Figure 1, Table 2)

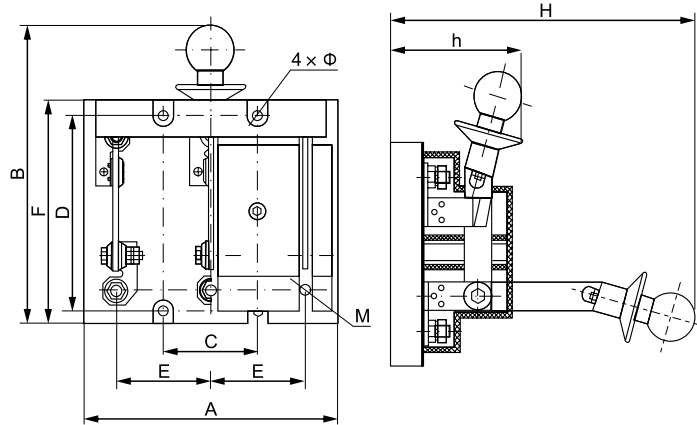


Figure 1

Table 2

Model and specification	160		
	2P	3P	4P
A	78	118	158
B	160	160	160
C	/	40	80
D	100	100	100
E	40	40	40
F	120	120	120
H	178	178	178
h	82	82	82
M	6	6	6
φ	7	7	7

6 Ordering instructions

Please specify the model features, voltage class, current class, pole number, operating mode and quantity of the switch when ordering. For special order, please consult our Technical Department.

For example: TGHD11N-100/38B 10 sets.